

**description**

Wireless FM transmitter, microphone, personal receiver and headset

**application**

For use by people with auditory attention deficit, fluctuating hearing loss, unilateral hearing loss, or minimal to mild hearing loss; useful in classrooms, live tours, senior centers, conference rooms, banks, hospitals, or in the home

**key features**

Very easy to operate; lightweight and comfortable; compatible with all Phonic Ear FM transmitter/receiver models

**specifications:**

# EASY LISTENER™

**personal FM system**

**transmitter: PE 300T**

transmitting frequency	72MHz to 76MHz (U.S./Canada) 37, 72, or 173 MHz (outside U.S./Canada)
modulation	FM narrow-band
operating range	30m/100ft
user controls	off/on
inputs/outputs	3.5mm auxiliary input jack 2.5mm microphone input jack
battery life	40Hr (AA alkaline) 10Hr (AA NiCad)
nominal volume setting	
size (WxHxD)	5.6 x 9.4 x 2.5 cm/2.2 x 3.7 x 1 in
weight	80g/2.8oz
case	ABS plastic

**receiver: PE 300R/350FSR****channel selector (PE 350FSR only)**

Users can choose from six simultaneous programs — ideal for live tours, multi-room usage, or audio description

**NOTE:**

Attenuated headset AT0606 (not shown) is available for educational use. (See optional accessories on back)



receiving frequency	72MHz to 76MHz (U.S./Canada) 37, 72, or 173 MHz (outside U.S./Canada)
modulation	FM narrow-band
user controls	off/on/volume
inputs/outputs	accessory output jack
battery life	60Hr (AA alkaline) 15Hr (AA NiCad)
size (WxHxD)	5.6 x 9.4 x 2.5 cm/2.2 x 3.7 x 1 in
weight	80g/2.8oz
case	ABS plastic

**12 unit charger: PE 300C**

capacity	12 units (transmitters and/or receivers)
power supply	wall transformer (AT0461)
user control	none
color	black with aluminum trim
size (WxHxD)	39.4 x 15.2 x 29.2 cm/15.5 x 6 x 11.5 in
weight (empty)	1859g/4.1lbs



# audiological specifications - ANSI S3.22 (1987): PE 300R/350FSR



standard headset (AT0541-E)



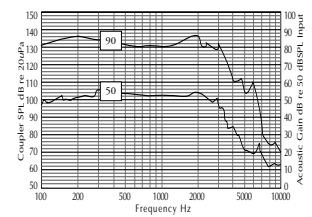
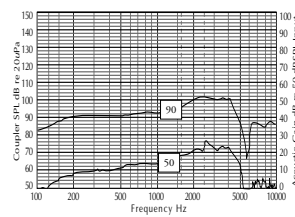
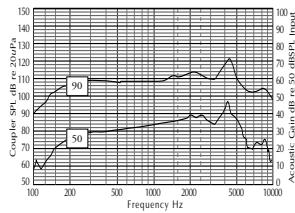
attenuated headset (AT0606)



N-100 ohm earphone (AT0016)

SSPL 90	120dB SPL	103dB SPL	137dB SPL
HF average SSPL 90	111dB SPL	97dB SPL	132dB SPL
HF avg. full-on gain (50dB SPL input)	37dB	20dB	53dB
full-on gain/peak (50dB SPL input)	47dB	27dB	54dB
frequency response range	125-9000 Hz	100-6000 Hz	100-4600 Hz
THD at 500Hz	4%	2%	3%
THD at 800Hz	3%	3%	4%
THD at 1600Hz	2%	2%	3%
equivalent input noise level	35dB SPL	40dB SPL	30dB SPL
battery current drain	10mA	11mA	16mA

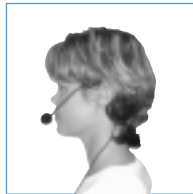
saturated output  
SSPL-90/full-on gain  
90 and 50 dB SPL input



## microphone options



AT0814M (with mute)  
earhook mic



AT0655M  
behind-the-neck micro-  
phone with mute switch



AT0291-L  
directional microphone  
with lavalier cord



AT0164-L  
omni-directional microphone



AT0720  
conference microphone

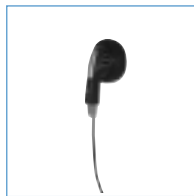
## optional accessories



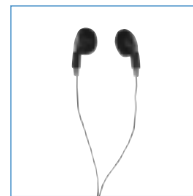
AT0541-E  
standard headset



AT0606  
attenuated headset



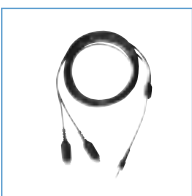
AT0538-M  
monaural earbud



AT0538-S  
binaural earbuds



AT0539  
stetoclip  
requires transducer cord (AT0545)  
& transducer (AT0016)



AT0721  
Y cord for two conference  
microphones



AT0512-BU  
lavalier cord



AT0542  
small carrying case



AT0594  
hip pack  
(Black, Navy, Red, Royal Blue)



AT0771  
tote bag