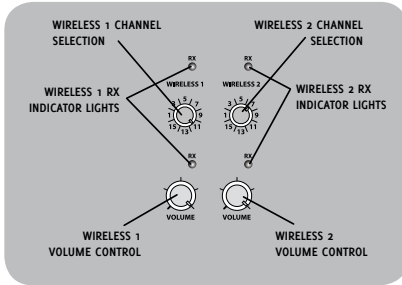


ANCHOR AUDIO WIRELESS

CHANNEL SELECTION - BUILT-IN RECEIVER

1. Choose any available wireless channel from 1 thru 16
2. Set the Wireless Channel Selection Knob to the channel you choose in step 1

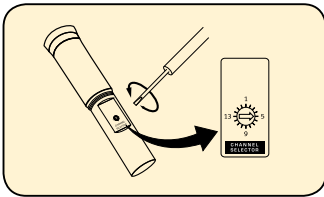


If you have two wireless receivers repeat above for the second receiver. **Remember**, each receiver/transmitter pair must be set to different channels to avoid interference.

OPERATING THE WIRELESS MICROPHONE/TRANSMITTER

CHANNEL SELECTION - HANDHELD TRANSMITTER

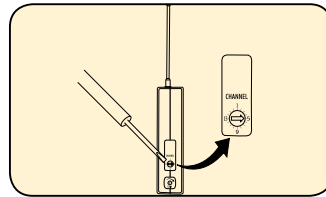
1. Unscrew battery cover on bottom of microphone
2. Set the CHANNEL SELECTOR dial to match the channel setting of your receiver
3. Replace battery cover and tighten firmly



The wireless RX indicators will light (*only one indicator will light at a time*) when the wireless signal is being transmitted and received

CHANNEL SELECTION - BODY-PACK TRANSMITTER

1. The channel selection dial is located on the side of the transmitter
2. Set the CHANNEL selection dial to match the channel setting of the receiver



AC OPERATION & BATTERY CHARGING/INDICATORS

Go Getter Sound Systems includes an automatic charging system designed to properly charge and maintain the systems built-in battery. The Battery Level Indicator **Green** Light will dim and eventually turn off when battery is low. To charge the battery, plug the AC power cord into the Go Getter. Plug the other end of the cord into AC outlet. The Charge Indicator Light will show solid **red** light when charging and turn off when charging is complete.

SYSTEM STORAGE & BATTERY

Fully charge battery before first use and storage. For extended periods of storage either leave system plugged into an AC outlet or charge the system at least once each month for a minimum of 24 hours.

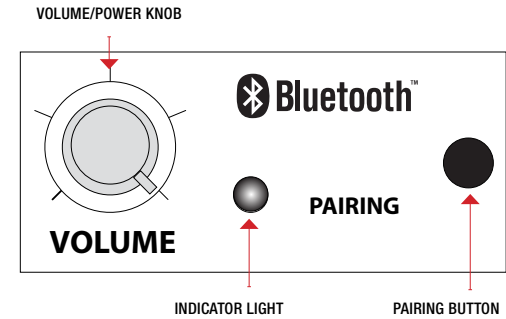
BUILT-IN BATTERY MAINTENANCE

To preserve battery life the built-in battery **MUST** be FULLY charged before the first use. Regardless of length of operation, it is recommended that the battery be fully charged as soon as possible after each use.

OPERATING THE BLUETOOTH TRANSMITTER

POWERING UP THE BLUETOOTH

1. Turn on the Bluetooth with the volume knob (it will make a boot up noise).
2. Before hooking up your device, take a moment to go over what the different LED light signals mean:
 - a. **No light:** indicates either Bluetooth is off, or it is in sleep mode, and cannot connect
 - b. **Blinking light:** indicates pairing mode, this is when you should connect
 - c. **Solid light:** indicates connection, your device is connected



PAIRING A DEVICE

1. Press the pairing button (it will acknowledge pairing mode with a beep) this mode will last 90 seconds. If no device is paired within the 90 seconds, the Bluetooth will enter sleep mode.
2. When the Bluetooth module is in pairing mode, it is discoverable and will show up on the selection list of your Bluetooth enabled device.
3. Select the Bluetooth titled "Anchor Audio" to pair your device with the Anchor Audio Sound System.
4. If a previously paired device is in range and discoverable, the unit should automatically make a connection, however this may depend on your individual device.
5. When the device has successfully connected to the Bluetooth, the Bluetooth module will beep to signify connection and the Blue LED will become solid.
6. Now you can play audio from your Bluetooth device to the Anchor Audio Portable Sound System. You can adjust volume by using the Bluetooth module's knob, as well as the volume control on your device.

Frequently Asked Questions:

What is the range of Anchor Audio Bluetooth?

The Anchor Audio Bluetooth range is 100 ft. line of sight.

My Sound System is auto-connecting to a device, but I don't know which one. Can I disconnect directly from the Sound System?

Yes, if your unit is auto-connecting to a device that you cannot identify (because for example, you're in a room with other people who have connected to the unit in the past), you may need to manually disconnect that pair from the Sound System itself. Just hold the 'pairing' button for two seconds, and the Sound System will disconnect from the device it is currently connected to, and immediately go into pairing mode.

What kind of modes can my phone be in that allow the Bluetooth connection to still work?

Bluetooth will work in modes such as Airplane mode and Do Not Disturb (or the equivalent). Just be sure to still have your Bluetooth setting turned on. To simplify the process, put your phone in the desired mode first, and then secure the Bluetooth connection, as moving into these modes may cause disconnection.

What happens if I get a phone call?

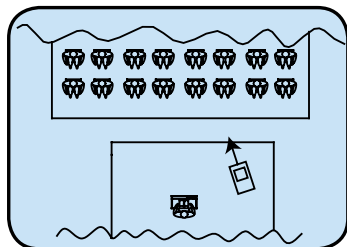
Incoming and outgoing calls should pause the audio stream. The audio from the call should not be transmitted via Bluetooth. To avoid interrupting audio, set device in Airplane mode, then enable Bluetooth, ensure your connected, and you should not encounter any interruptions in your audio stream.

**Bluetooth connection and behavior may depend on your individual device settings and capabilities, all testing was done using an Apple iPhone.*

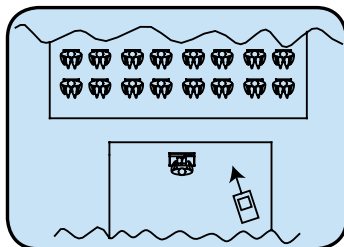
NOTE: All Anchor Audio Sound System Bluetooth connections will be named "Anchor Audio", so if your using multiple systems, be sure to keep track of each connection.

SOUND SYSTEM PLACEMENT

CORRECT SYSTEM PLACEMENT



WRONG SYSTEM PLACEMENT



(having the microphone too close to front of unit may cause feedback)

HAVING TROUBLE WITH YOUR SOUND SYSTEM?

CONDITION	POSSIBLE SOLUTION
No Sound (<i>power LED off</i>)	<ul style="list-style-type: none"> • turn POWER switch ON • charge battery or plug in AC cord • safely shut down if unit overheats, turn volume lower & turn speaker ON
No Sound (<i>power LED on</i>)	<ul style="list-style-type: none"> • check for output from source • make sure all cables are completely plugged in • turn up volume control of input used • remove plug from speaker output if not using external speaker output
Shortened Battery Life	<ul style="list-style-type: none"> • charge battery fully; if battery life continues to deteriorate, contact Anchor Audio customer service: 800.262.4671
Distorted Sound	<ul style="list-style-type: none"> • lower system volume control • lower input volume control
Excessive Hum or Noise	<ul style="list-style-type: none"> • use shielded cables • use balanced microphone

HAVING TROUBLE WITH YOUR WIRELESS SYSTEM? (*Wireless Models Only*)

CONDITION	POSSIBLE SOLUTION
No Sound (<i>RX Indicator: ON</i>)	<ul style="list-style-type: none"> • turn up WIRELESS volume control • make sure mic is plugged into body pack transmitter
No Sound (<i>RX Indicator: OFF</i>)	<ul style="list-style-type: none"> • push mic power button • turn Go Getter POWER switch on • make sure transmitter power switch is on • set receiver and transmitter to same channel • replace battery in transmitter

The Go Getter Sound System comes with a six year warranty, Anchor Audio Bluetooth comes with a six year warranty, and all Anchor Audio batteries, CD/MP3, and wireless come with a two year warranty.

NEED MORE HELP? Go Getter Sound System Setup & Operation Videos!
Visit Our Website: www.anchoraudio.com



100-0228-000 Rev. B

Quick Start Manual

GO GETTER SOUND SYSTEM

You can view a demonstration video complete with a trouble shooting section at www.anchoraudio.com.

Please check your new unit carefully for any damage which may have occurred during shipment.

CONNECTING MULTIPLE SOUND SYSTEMS

UNPOWERED COMPANION SPEAKER

Connect one end of a speaker cable (*SC-50NL*) to the SPEAKER OUT jack on the back of a powered Go Getter sound system. Connect the other end to the jack labeled IN on the back of a Go Getter unpowered companion speaker.

NOTE: AC power is not required for an unpowered companion speaker.

POWERED SOUND SYSTEMS

This method uses the line-output feature of your Go Getter sound system. Connect a speaker cable (*1/4" phone*) from the LINE OUT jack on the first powered Go Getter to the LINE IN jack on the second powered Go Getter. Set the volume of the second Go Getter to maximum so that full volume control will be at the first or primary sound system.

NOTE: The line-output feature can also be used to send the signal to a sound system in a different room or a separate recording device.

Anchor Audio, Inc. • (800) 262-4671 • www.anchoraudio.com